



2020 NRTRC TAO VIRTUAL CONFERENCE



Northwest Regional Telehealth Resource Center and the Telehealth Alliance of Oregon **Welcome You**

Bronze Sponsors:



Exhibitors:




Non-profit:

[Pacific Northwest University of Health Sciences](#)

[University of Utah Health Clinical Neuroscience](#)

VIRTUAL SESSION INSTRUCTIONS

- Audio and video are muted for all participants
- Use the Q&A feature to ask questions An icon consisting of two overlapping speech bubbles, one orange and one blue, representing a question and answer feature.
- Moderator will read questions to the speaker
- Presentation slides are posted at <https://nrtrc.org/sessions>. Recordings will be posted after the conference.



HRSA REGION 10 “STATE OF THE REGION” PANEL



- Moderator: Alia Fry
- Presenters:
 - John R Graham, HHS Regional Director, IEA
 - Mary Sheridan, Bureau Chief, Idaho Dept. of Health and Welfare
 - Rose Locklear, Oregon Office of Rural Health
 - Matt McCullough, Associate Director, NRTRC and UETN
 - Kimberly Miyazawa Frank, Regional Administrator, ACF
 - Rachelle Zylstra, Regional Administrator, ACL
 - Sharon Turner, Regional Administrator, HRSA
 - David Dickinson, Regional Administrator, SAMHSA
 - Tammy Arndt, Director, Northwest Telehealth
 - Darryl Means, Regional Administrator, CMS

Northwest Regional Telehealth Resource Center

Alaska

Idaho

Montana

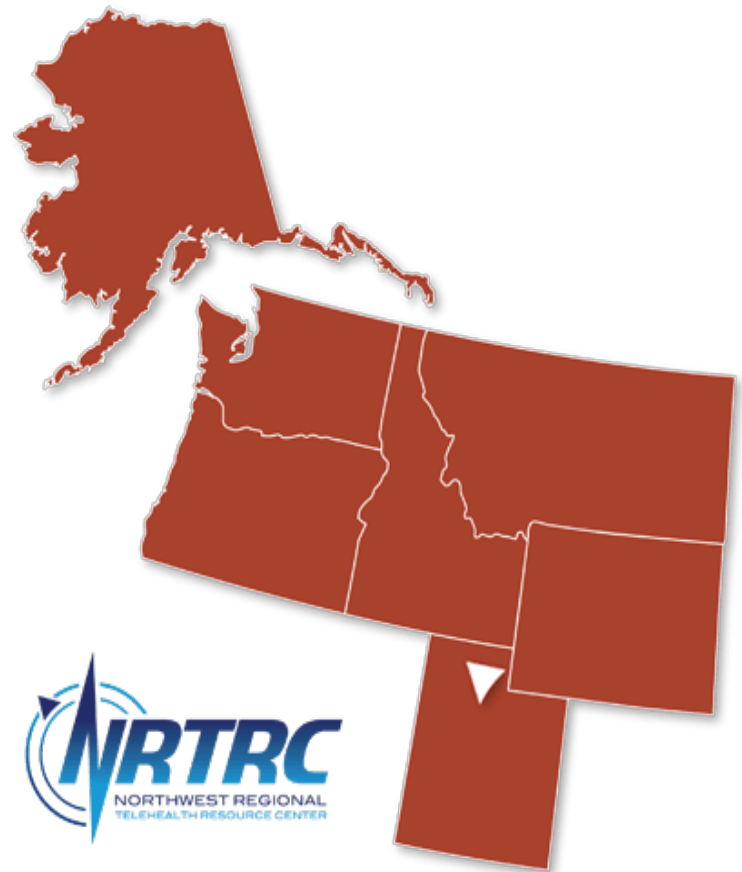
Oregon

Utah

Washington

Wyoming

<https://nrtrc.org/>

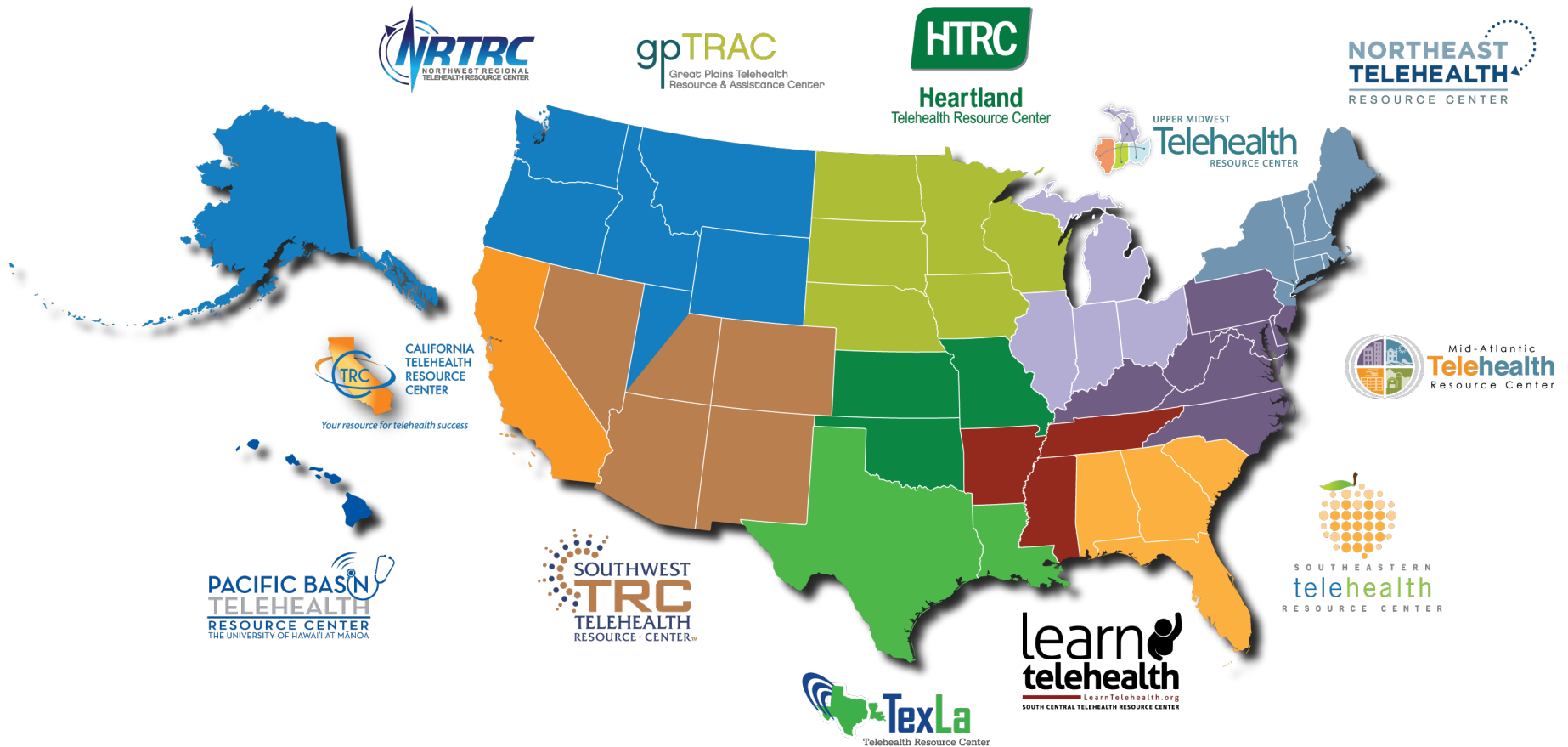


Telehealth Resource Centers

Purpose: To assist health care organizations, networks, and health care providers in the implementation of cost-effective telehealth programs to serve rural and medically underserved areas and populations. To provide customized technical assistance, training, and support.

Funded by the Office for the Advancement of Telehealth, Federal Office of Rural Health Policy, Health Resources and Services Administration (HRSA), HHS

TelehealthResourceCenters.org





2 National Resource Centers


NRTRC	gpTRAC	NETRC
CTRC	HTRC	UMTRC
SWTRC	SCTRC	MATRC
PBTRC	TexLa	SETRC

12 Regional Resource Centers

Responding to COVID-19

[Home](#) [Telehealth Resources](#) [Find a TRC](#) [Request Assistance](#) [Twitter](#) [Facebook](#) [YouTube](#) [Search](#)

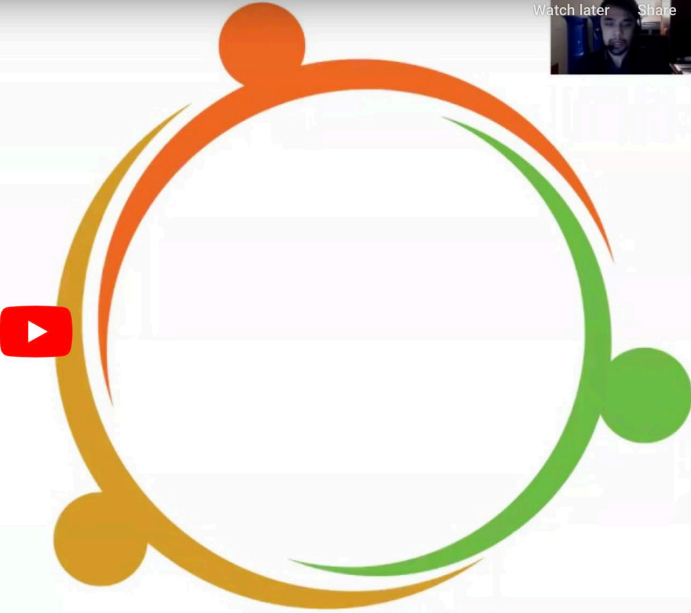
NCTRC Webinar - Telehealth and COVID 19

Watch laterShare



NATIONAL CONSORTIUM OF
TELEHEALTH
RESOURCE CENTERS

**Telehealth
and COVID-19**
March 19th, 2020



[DOWNLOAD THE POWERPOINT](#) [UPDATED POLICY SLIDES - 3/24/2020](#)

A special webinar from the National Consortium of Telehealth Resource Centers.

Responding to COVID-19

- COVID-19 Telehealth Assessment with Utah Department of Health. (Early March 2020)
- 200 respondents
- 40% are using telehealth for patients
- 22% using telehealth for COVID-19
- 61% do not have capacity to provide technical assistance.
- Main barriers: technology, payment, workforce, bandwidth in rural areas.

Responding to COVID-19



Telehealth Technology Basics

Telehealth 101 Workshop (basics, legal, payment, workflow, technology)

Telehealth Policy Panel

How to start your telebehavioral health service

Responding to COVID-19



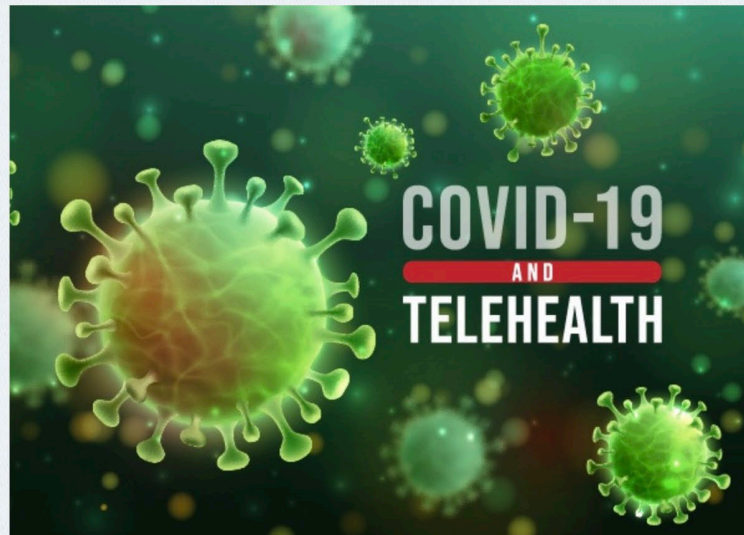
[Telehealth Topics](#) [Education](#) [Annual Conference](#) [COVID-19](#) [About](#) [Join Us](#)

COVID-19

COVID-19 and Telehealth

Below are resources to assist healthcare providers navigate changing regulations that support the use of telehealth during the COVID-19 public health emergency.

COVID-19 Telehealth Toolkit
State Laws and Reimbursement Policies
CMS updates
HIPAA Updates
SAMHSA Updates
DEA Updates



Subscribe to Telehealth News



Responding to COVID-19

NRTRC COVID-19 & Telehealth Office Hours

Fridays, 2:00-3:00 MDT / 1:00-2:00 PDT / 12:00-1:00 ADT    
March 26, 2020

Here is an opportunity to get your questions about telehealth answered. Starting Friday, March 27, we will conduct weekly Office Hours to address as many questions as we can in an hour.

Join Zoom Meeting

Meeting ID:

[Read More](#)

NRTRC Quick Start Guide to Telehealth

During the current public health emergency, March 20, 2020    
March 24, 2020

Under normal circumstances, the development and implementation of telehealth is best accomplished through a thorough, deliberate planning process. However, due to the current public health emergency, health care providers are being encouraged to utilize telehealth when possible in lieu of seeing patients in person.

This quick start guide is for health care providers who wish to implement simple web-based video to interact with their patients. It does not cover other types of telehealth, such as store-and-forward or remote patient monitoring, or the use of other telehealth technologies such as telemedicine carts or medical peripherals. All of these are excellent and often appropriate means of caring for patients, but are not covered here.

This document is intended for general education only. It is not clinical or legal advice.

[Read More](#)

Contact Us

Deb LaMarche

Program Director & PI

8901-587-6190 office

801-690-3406 cell

deb.lamarche@utn.org

<http://nrtrc.org>

Matt McCullough

Associate Director

801-585-6560 office

801-807-8727 cell

mattm@utn.org

<http://nrtrc.org>

